



Duplo

Duplo USA Corporation

3050 S. Daimler Street, Santa Ana, CA 92705
tel 800.255.1933 fax 949.851.3054
www.duplousa.com

All rights reserved. No part of this document may be reproduced without permission of Duplo USA Corporation.

**DDC-810
RAISED SPOT UV COATER**

PRINT EMBELLISHMENT MADE EASY

Bringing Profitability Back to Print

A highly viable solution, the **DDC-810 Digital Raised Spot UV Coater** brings profitability back to print. Print is just ink on paper but by adding print embellishment, it becomes an experience that engages the senses and one that your customers can see and touch. The **DDC-810 accelerates your margin growths** by creating greater value for products such as business cards, postcards, invitations, boxes, direct mailers, and much more!

FEATURES

- Compact footprint fits into limited spaces
- 600 x 600 dpi inkjet technology
- UV lamp curing instantly dries sheets
- Accurate image registration
- Easy job setup in 4 simple steps
- User-friendly PC Controller software
- Duplo air suction feed system with 5.9" (150 mm) feed capacity
- Fast-tracked delivery and installation

The DDC-810 is a compact, design-driven solution that utilizes **600 x 600 dpi inkjet technology**, **UV lamp curing**, and **camera image registration** to deliver production output with texture and depth by applying a gloss varnish to defined areas of the substrate.

Equipped with Duplo's widely renowned air suction feed system, the DDC-810 handles **maximum paper sizes of 14.33" x 29.13" up to 450 gsm**. Using the PC Controller software, operators can **set up a job in 4 simple steps** and begin producing jobs within minutes. Simply upload the raised spot UV layer file in PDF or TIFF format along with the XML file with the registration mark data, load the paper in the feeder and press Send then Start. Its CCD camera system – which automatically corrects for shrinkage, stretch, and skew – along with unique registration marks ensures the **most accurate registration** of the spot UV layer onto the printed document. The DDC-810 can process up to 36 ppm (letter size) and up to 21 ppm (ledger size).

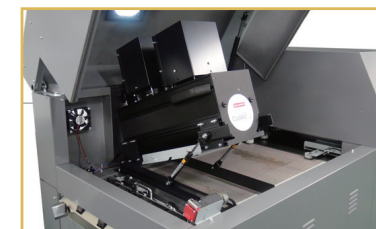
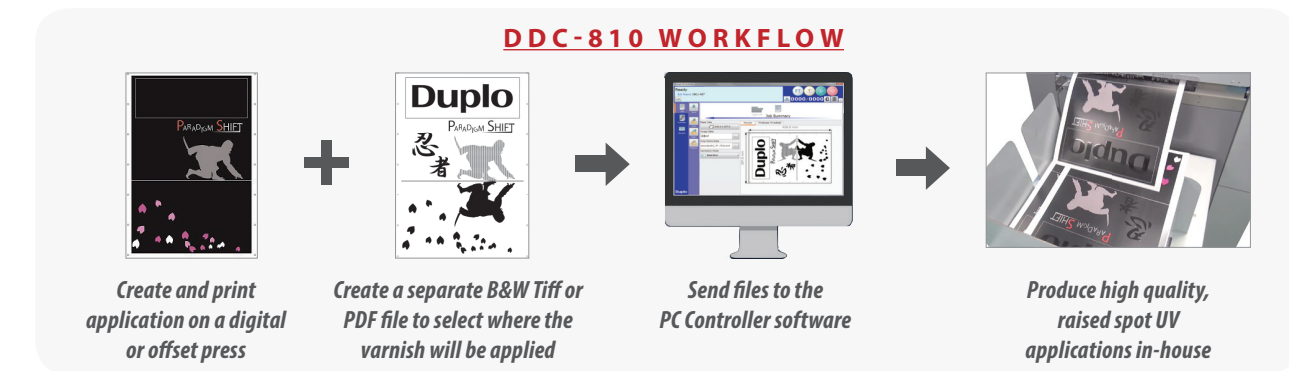
The DDC-810 offers availability as well as **fast-tracked delivery and installation**, allowing users to begin running their first jobs within hours! The DDC-810 Digital Raised Spot UV Coater makes print embellishment easy!

The new **Variable Coating Barcode Kit** adds variable capabilities for images and text. With this option, the DDC-810 can read 1D or 2D barcodes on each sheet and automatically load the pre-ripped spot UV layer file. The barcode kit also provides the ability to utilize hot folders to help streamline the operation by reducing the number of mouse clicks the operator needs to make.

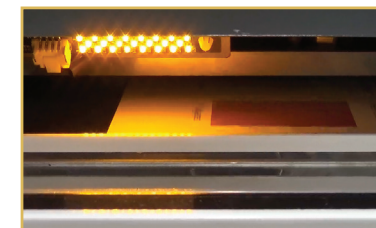


DDC-810 Digital Raised Spot UV Coater

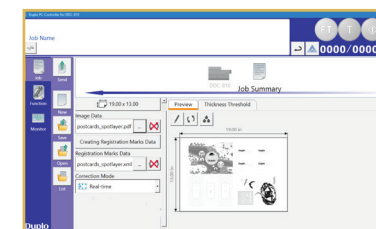
DDC-810 WORKFLOW



INSTANT UV LAMP CURING



PRECISE IMAGE REGISTRATION WITH CCD CAMERA SYSTEM



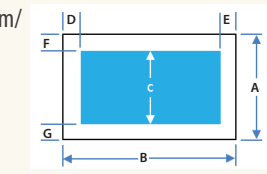
MAKE FINE ADJUSTMENTS TO THE PRINT IMAGE POSITION VIA THE PC CONTROLLER



AIR SUCTION FEED AND SHEET ALIGNMENT SYSTEM

SPECIFICATIONS

Paper Size	A. Width: 11" - 14.33" (279 mm – 364 mm) / (B3) B. Length: 8.27" - 29.13" (210 mm – 740 mm) Restriction: Width to Length Ratio (3:1, 2:1) when paper length is over 19.68" (500 mm)
Print/Non Print Area	C. Printable width: 13.03" (331 mm) D -G. Minus (-) 10 mm Maximum/ 0.39" from lead/trail/left/right edge (Non printable area)
Paper Type	• Art/ Coated Paper 157 – 450 gsm • PP Laminated, no over the film edge from paper on the registration side, less than 0.4mm • Paper Condition: Curl less than 2 mm (R50) Wave less than 2.0 mm incl.
Image Data Format	PDF/TIFF
Paper Loading Capacity	5.9" (150 mm)
Print Accuracy	• +/- 0.2 mm both X & Y direction • Adjustment steps (X & Y) +/- 0.1 mm
Print Thickness	• 20 um - 80 um (in 10 um increments) • 7 Thickness settings
Estimated Processing Speed	• 21 ppm (ledger size) • 36 ppm (letter size)
Average Volume Estimation	• 3 liter varnish can print over 3,500 sheets with 40 um and 15% coverage rate
Power Requirements	• 208 -240V 50/60Hz 38A (+6%, -10%) • 110V 60Hz 15A for PC
Dimensions (WxDxH)	138.5" x 57.2" x 72.4" (3,518 x 1,454 x 1,840 mm)
Weight	1126.6 lbs (511 kg)



As part of our continuous product improvement program, specifications are subject to change without notice.